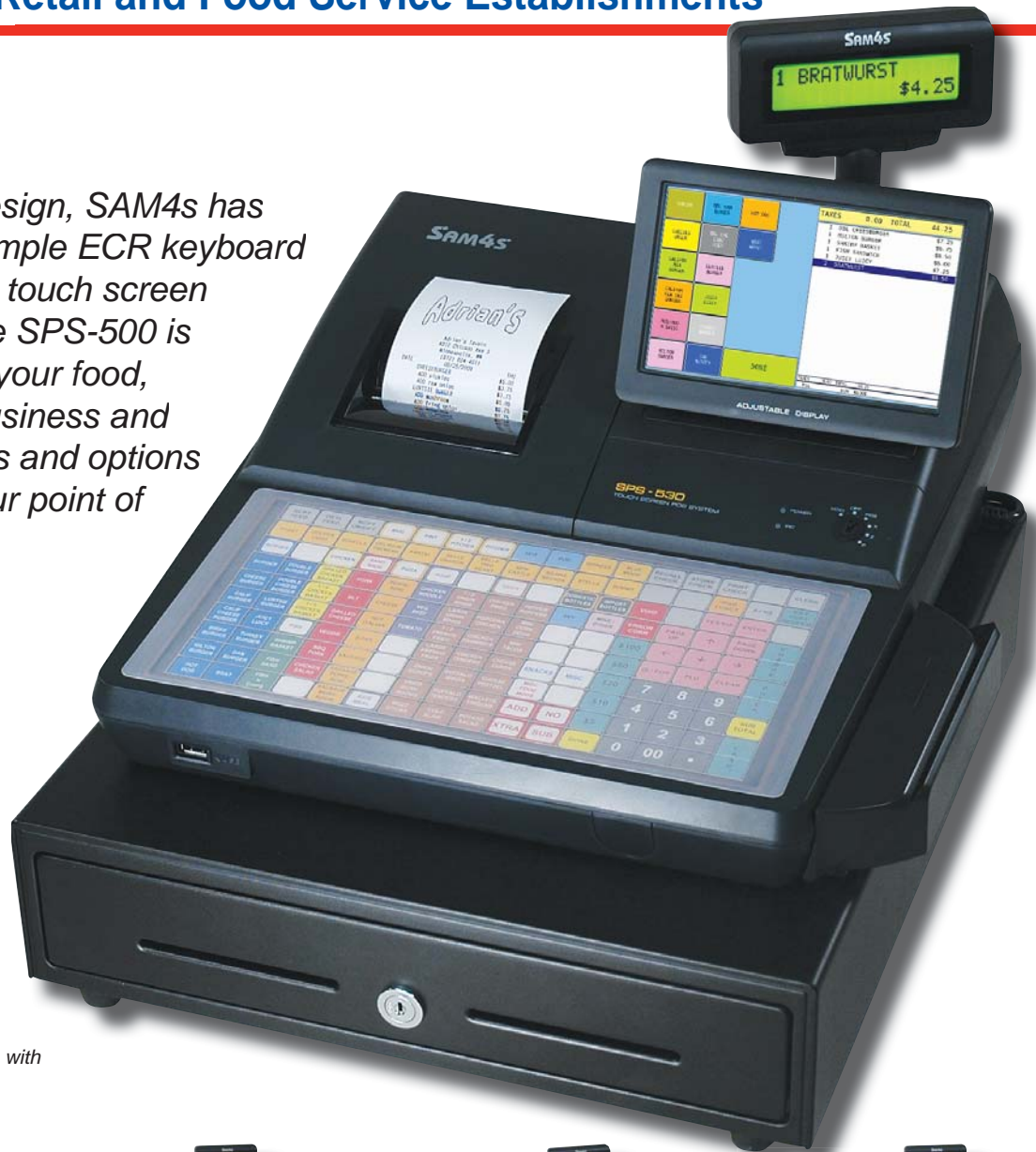




# SPS-500 Series

Hybrid ECRs for Retail and Food Service Establishments

Featuring a hybrid design, SAM4S has combined fast and simple ECR keyboard entry with an intuitive touch screen operator display. The SPS-500 is easily configured for your food, beverage, or retail business and provides the functions and options you need to meet your point of service needs.



SPS-500 Series Hybrid ECRs Shown with Optional Card Reader



### SPS-520 FT

Flat Spill-Resistant Keyboard; Receipt and Journal Printers



### SPS-520 RT

Raised-Key Keyboard; Receipt and Journal Printers



### SPS-530 FT

Flat Spill-Resistant Keyboard; 3" Receipt Printer



### SPS-530 RT

Raised-Key Keyboard; 3" Receipt Printer

# Reliable ECR Platform – Exceptional POS Capability

Using robust integrated software, your authorized SAM4s dealer can design your custom application by choosing from an array of features available for food and retail operators. The SPS-500 is an ideal replacement for older-technology ECRs, a cost-effective alternative to PC-based POS systems, and a powerful platform for independent franchises, multi-unit operators and chain accounts.

- Casual Dining • Family Style Restaurants • Bar/Restaurants
- Quick Service Restaurants • Sandwich • Bakery • Pizza
- Coffee • Taco • Hamburger • Ice Cream and Yogurt • Deli's
- Specialty Foods • Specialty Gourmet • Liquor Stores
- Beer/Wine • Gift Shops

## Choose a Flat or Raised-Key Keyboard

The flat-keyboard configuration can easily accommodate over 100 one-touch preset keys, significantly more than any touch screen POS terminal. Your cashier can locate and register items quickly, keeping your lines moving. The raised keyboard provides all the functions required by busy retailers.

## Lock & Key Security

Authority is managed using traditional, secure cash register keys.

## Display Up to 200 Operator Screens with 24-Items per Screen

The color touch screen can be configured to guide the operator through choices of flavors, toppings, condiments, and instructions. If you sell a combo meal, a screen or series of screens can display to reflect the combo choices. If the item requires condiments or instructions, the screen can lead your operator through options and additional choices.

## 7" Color Touch Screen Improves Order Entry Accuracy

Unlike an ECR that may display only the last item entered, the SPS-500 displays the entire order, allowing your operator to confirm the order and then refer to the display as they fill it.

## On Screen Manager and Program Access

Access manager and programming functions intuitively through menus and on-screen options. Programming and editing can be done without referring to manuals. Managers can easily view report data and quickly adjust to changing conditions.

## Flexible, Built-In Printers

A cost-effective design allows the built-in printer to generate both receipts and requisitions – the 3" printer (SPS-530) delivers an extremely high-quality requisition. If multiple ECRs are connected in the same network, print jobs can be directed to the printer in another ECR, effectively allowing one ECR to double as a system kitchen printer. In the same manner, receipts or journal data can be routed as demanded by the application.



## Popular POS Workstation Components Included – Not Added On

An extremely cost-effective and environmentally friendly bundle – each SPS-500 includes a high quality international-style cash drawer, high-speed thermal printer(s), a rear customer display, and consumes less than 25 watts.



### Thermal Printer(s)

Reliable high-speed thermal receipt printer(s) featuring quick and easy drop-in paper loading.



### Color Touch Screen

The adjustable 7" color touch screen features up to 24 key positions per screen.



### Standard Cash Drawer

Features a 5 bill, 5 coin insert, two media slots and a standard security lock and key.

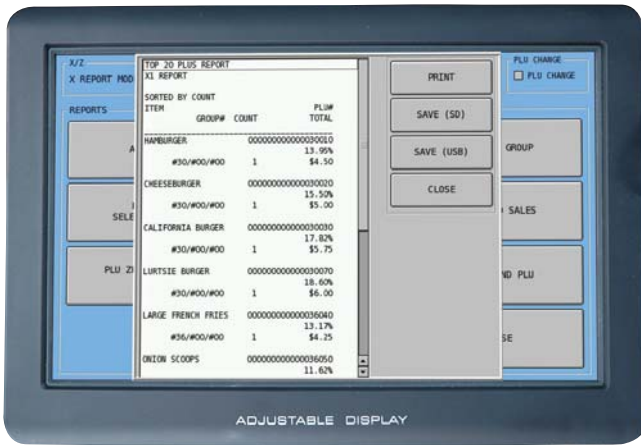


### Rear Display

The rear display allows consumers to monitor prices as items are entered and view the sale total.



# System Features



## System Reports

A menu driven selection of reports can be viewed on the ECR screen, printed at a local printer, polled remotely, sent electronically via FTP or saved to SD/USB memory. Sales information can be simultaneously collected on up to five different periods: for daily, weekly, monthly, quarterly or yearly record keeping.

## Standard Network Support

SPS-500 series ECRs can be connected in a fast and reliable Ethernet-style network. Networking supports report data consolidation, ECR programming, payment authorizations, polling, plus printer and video requisition routing.

## Time and Attendance

A basic time and attendance system provides payroll ready data for your in-house payroll system or payroll service. You get critical labor reporting, including sales/labor percentage and sales per man-hour. Information is easily accessible by store managers for real time staff management.

## Remote Polling

Poll by dial-up or Ethernet connection. Companion software for your PC, SAM500, supports your application by first polling sales information from individual ECRs, ECR networks or multiple remote locations. In your office SAM500 provides item file management and inventory functions. You can easily add or delete menu items and send new menu screens to your restaurants for daily, weekly or seasonal promotions.



## Insure Speed, Security and Efficiency with Integrated Credit, Debit and Gift Card Payments

Electronic payment sales can be processed in a single step at the SAM4s SPS-500 with an optional DataTran™ integrated payment appliance.

- The SPS-500 is electronic payment and gift card processing ready – no additional software modules are required.
- Free gift card processing is available through selected processing partners.
- Transactions can be processed in two seconds or less using the latest IPTran™ or TwinTran™ technology and a persistent internet connection.
- One Tran appliance can be used to process payments for a network of SPS-500 series ECRs.



Kitchen requisition printed by the SPS-530 80mm receipt printer shown 75% actual size.



## Cable Management

Connections are concealed in a recessed compartment, secure from accidental damage or disconnection.



## Memory Expansion

Expand memory using convenient compact flash technology. No disassembly required.



## Secure SD Port

SD Card Utilities include program Save/Load, report or screen capture, firmware updates & graphics uploading.



## USB Port in Front

Connect a keyboard to make programming quick and easy; or use a USB stick to Save/Load programs.

# Options and Components

Enhance the powerful SPS-500 series hybrid ECR with optional peripherals to complete a sophisticated system configuration.



## Magnetic Card Reader

Use to swipe payment cards when integrated payment options are implemented, or to log or clock in employees.



## Remote Printing

The SAM4s Ellix 20II V high-speed thermal printer can print two-color, bar codes and watermarks.



## Bar Code Scanning

Enjoy the advantages of scanning – price control, item movement reporting and labor savings.



## Polling and Inventory Software

Poll your ECR from a local or remote PC using SAM500 or PC/Poll.

## Features

- Memory Allocation System:
  - Up to 60,000 PLUs\*
  - Up to 999 Clerks\*
  - Up to 99 Groups\*
  - Up to 9,999 PLU Status Groups\*
  - Up to 200 Key Link Menu Screens\*
  - Up to 32 Registers per Network\*
  - Up to 4 Hard/Soft Check Files\*

\* With Optional Expanded Memory

- 20 Character Programmable PLU Descriptors
- 6-Line Preamble Receipt Message
- 6-Line Postamble Receipt Message
- Graphic Logo Printing on Receipt
- Stock Management
- Ingredient File
- Condiment Items
- 20 Price Levels (5 per PLU)
- Manager Control
- Link PLU
- Receipt On Demand
- Training Mode
- 6 Taxes by Tables, % or VAT
- 10 Discounts/Surcharges
- Cash/Check/Misc 1-16 Tendering
- 5 Currency Conversion Rates
- 0-3 Decimal Point (Selectable)
- Add Check
- Delivery Tracking
- Post Tendering
- Cash Declaration
- Check Tracking by Alpha
- Paid Check Recall
- Electronic Journal
- Over 60 Reports
- Not Found PLU



## Specifications

<b>Printer Type:</b>	Direct Thermal, Drop-and-Print
<b>Printer Stations – SPS-530:</b>	Receipt/Requisition 80mm Printer
<b>SPS-520:</b>	Receipt and Journal 58mm Printers
<b>Printer Speed – SPS-530:</b>	100mm per Second
<b>SPS-520:</b>	80mm per Second
<b>Displays – Operator:</b>	7" TFT-LCD Touch Screen
<b>Customer:</b>	Pop-Up Turret, 2 Lines by 16 Characters
<b>Keyboard Capacity – Flat:</b>	160 Programmable Locations
<b>Raised:</b>	Up to 90 Programmable Locations
<b>Serial Ports:</b>	Four Powered (5V Out) COM1 & COM2 (D-Sub-9M) COM3 & COM4 (RJ45)
<b>USB Ports:</b>	Two v2.0 (1 Front / 1 Rear)
<b>Cash Drawer Ports:</b>	Two Additional RJ11 (24V) Ports (Supports Open/Close)
<b>LAN Port:</b>	10/100 Base-T Ethernet (TCP/IP)
<b>Card Reader:</b>	Optional Integrated Dual Track MCR
<b>Compact Flash:</b>	Optional 6MB Compact Flash Memory Expansion
<b>Standard Cash Drawer:</b>	5 Bill, 5 Coin with Drawer Lock & 2 Media Slots
<b>Dimensions – ECR:</b>	14-3/4"W x 16-3/4"D x 9-3/4"H (Including Turret)
<b>Cash Drawer:</b>	15-3/4"W x 17-3/4"D x 4-3/8"H
<b>Shipping Weight:</b>	33 lbs. (14.97 Kg)
<b>Power Requirements:</b>	120 AC ± 10%, 60 Hz
<b>Power Consumption:</b>	Approx. 25 Watts
<b>Operating Temperature:</b>	32° ~ 104°F (0° ~ 40°C)
<b>Humidity Range:</b>	30% to 80% RH (Non-Condensing)



**CRS**  
Incorporated  
www.crs-usa.com

All product features are subject to change without notice.  
All product and company names are trademarks, service marks or registered trademarks of their respective owners.